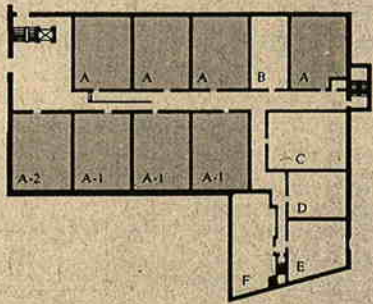
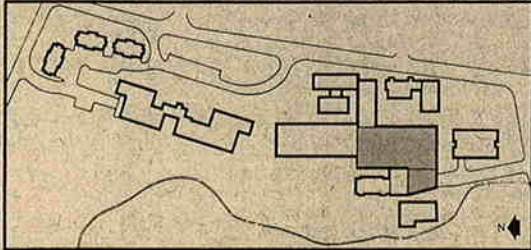
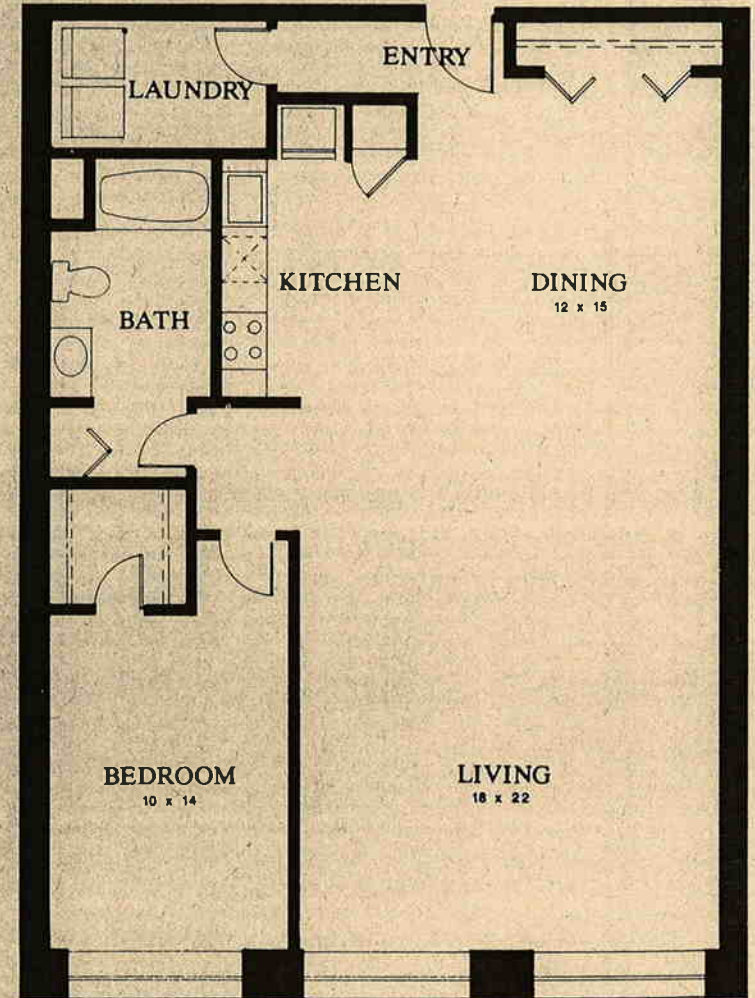


**TEN CHESTNUT STREET / PLANS A, A1, A2**

**1073-1257 SQUARE FEET**



Residences	First Floor	1 Bedroom/1 Bath
2101		
2102		
2103		
2104		
2109		
2111		
2112		
2113		



*The dimensions, size, and configurations are for illustrative purposes only and are subject to change without notice.*

Exeter Mill, 10 Chestnut Street, Exeter, New Hampshire 03833

