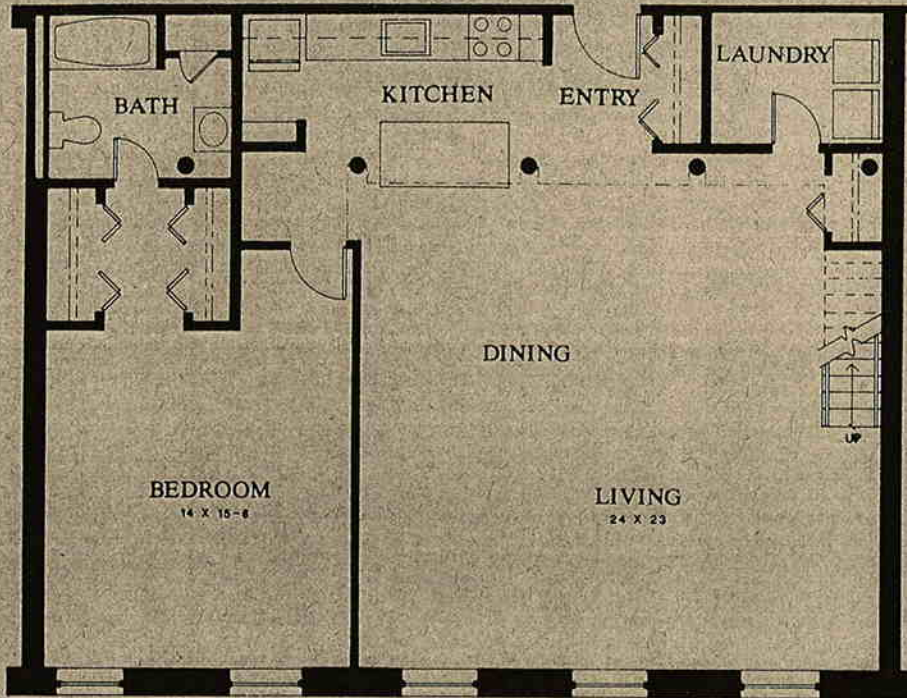
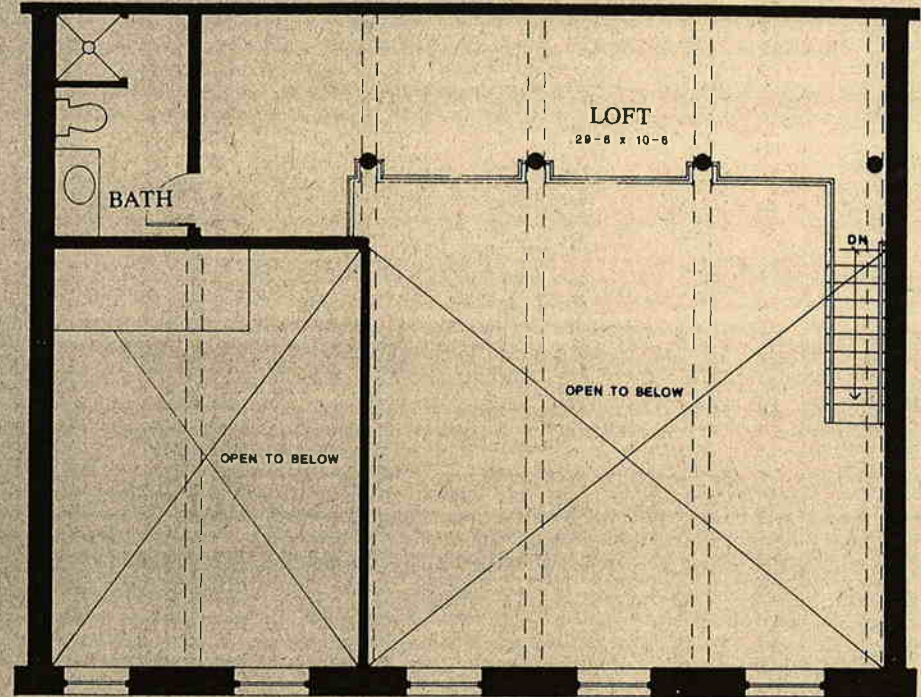


TEN CHESTNUT STREET / PLAN M1

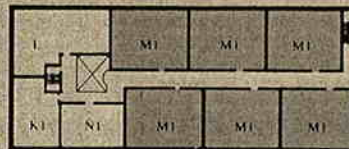
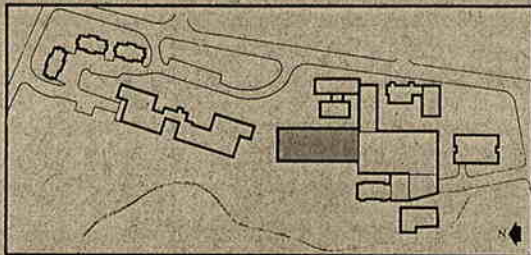
1617 - 1638 SQUARE FEET



Lower Level



Loft Level



Residences	Third Floor	1 Bedroom with Loft/2 Bath
1301		
1302		
1303		
1307		
1308		
1309		

The dimensions, size, and configurations are for illustrative purposes only and are subject to change without notice.

Exeter Mill, 10 Chestnut Street, Exeter, New Hampshire 03833

