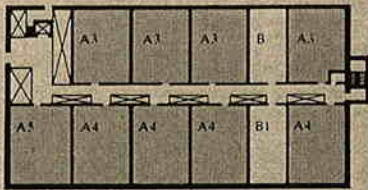
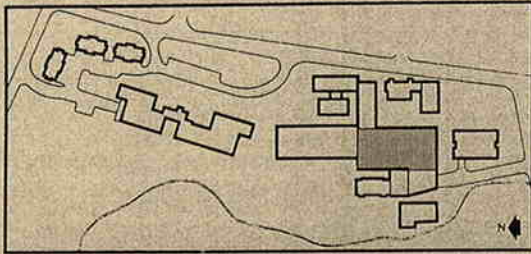


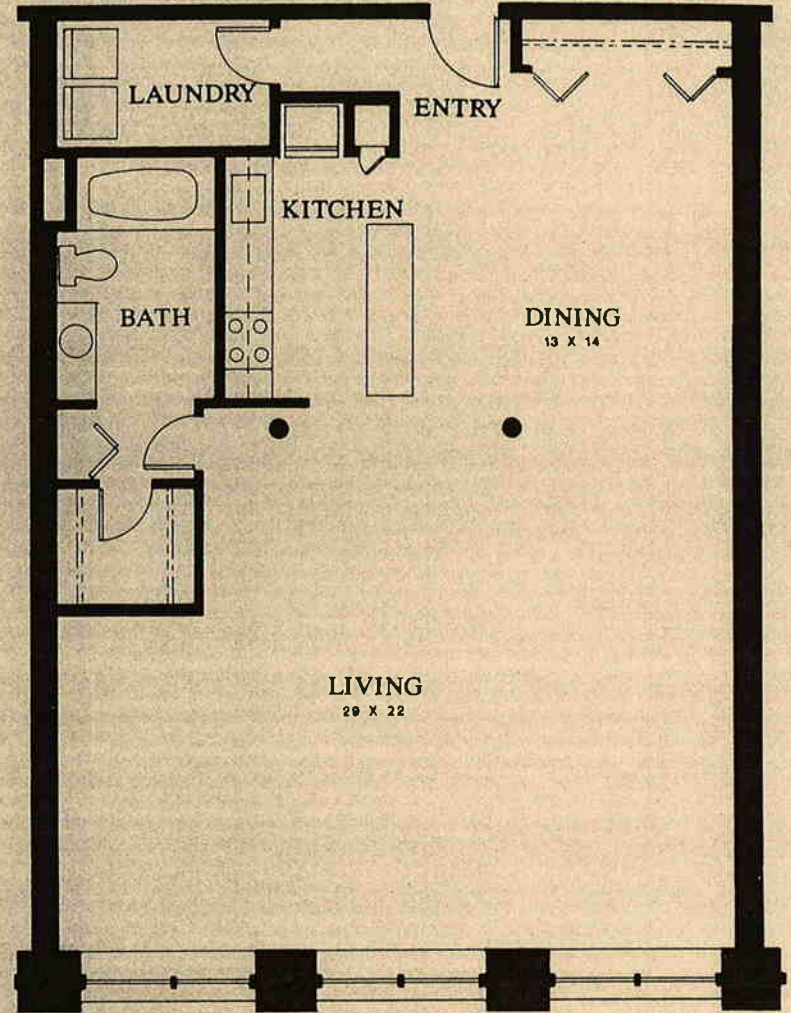
TEN CHESTNUT STREET / PLANS A3, A4, A5

1026-1258 SQUARE FEET



Residences Second Floor Studio/1 Bath

- 2201
- 2202
- 2203
- 2204
- 2206
- 2207
- 2209
- 2210
- 2211



The dimensions, size, and configurations are for illustrative purposes only and are subject to change without notice.

Exeter Mill, 10 Chestnut Street, Exeter, New Hampshire 03833

