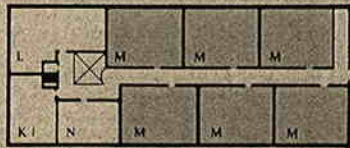
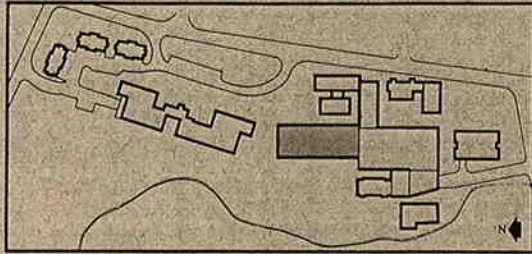
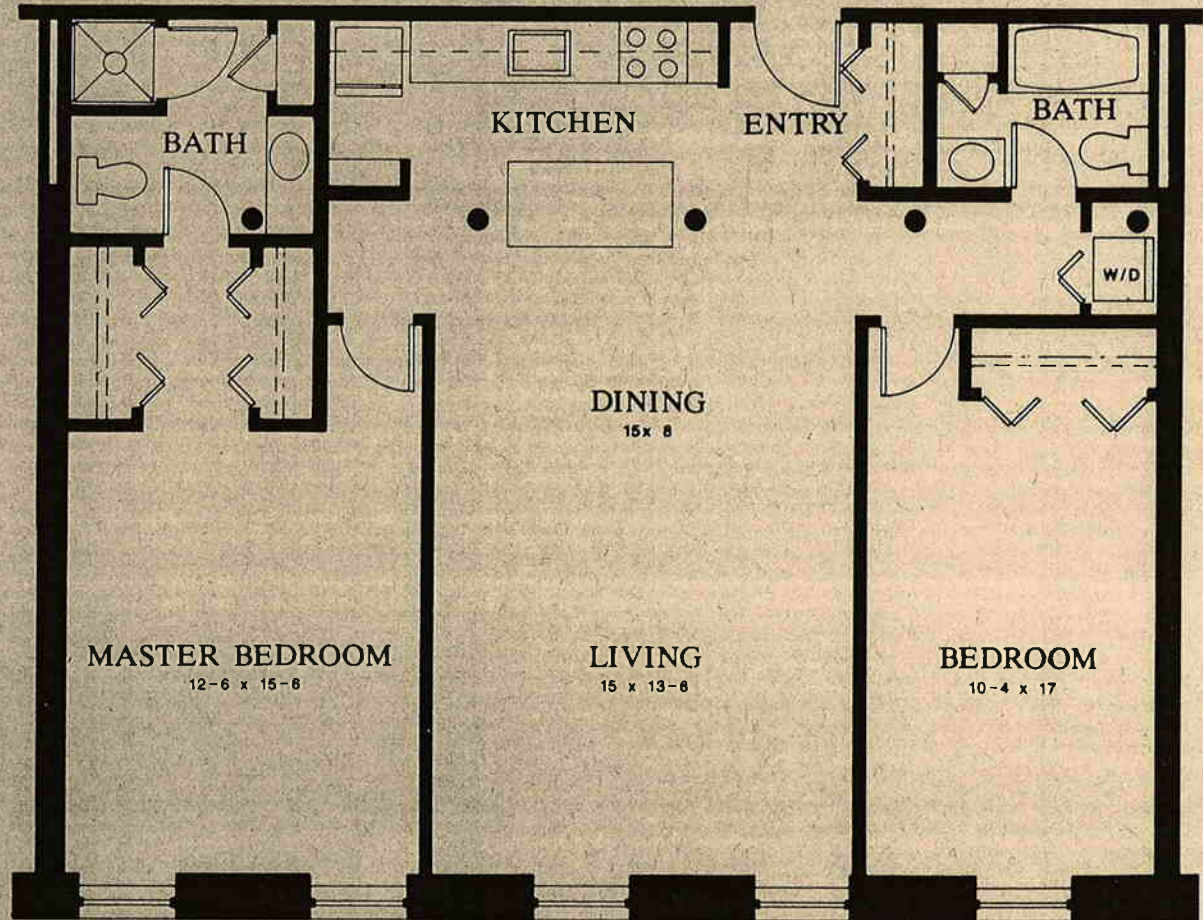


TEN CHESTNUT STREET / PLAN M

1148 - 1176 SQUARE FEET



Residences	Second Floor	2 Bedroom/2 Bath
1101	Same location	
1102	on east side	
1103	of First Floor	
1201		
1202		
1203		
1207		
1208		
1209		



The dimensions, size, and configurations are for illustrative purposes only and are subject to change without notice.

Exeter Mill, 10 Chestnut Street, Exeter, New Hampshire 03833

